

N.W. 1/4 OF N.W. 1/4  
SECTION 24, T.5N., R.2W., S.L.B. & M.

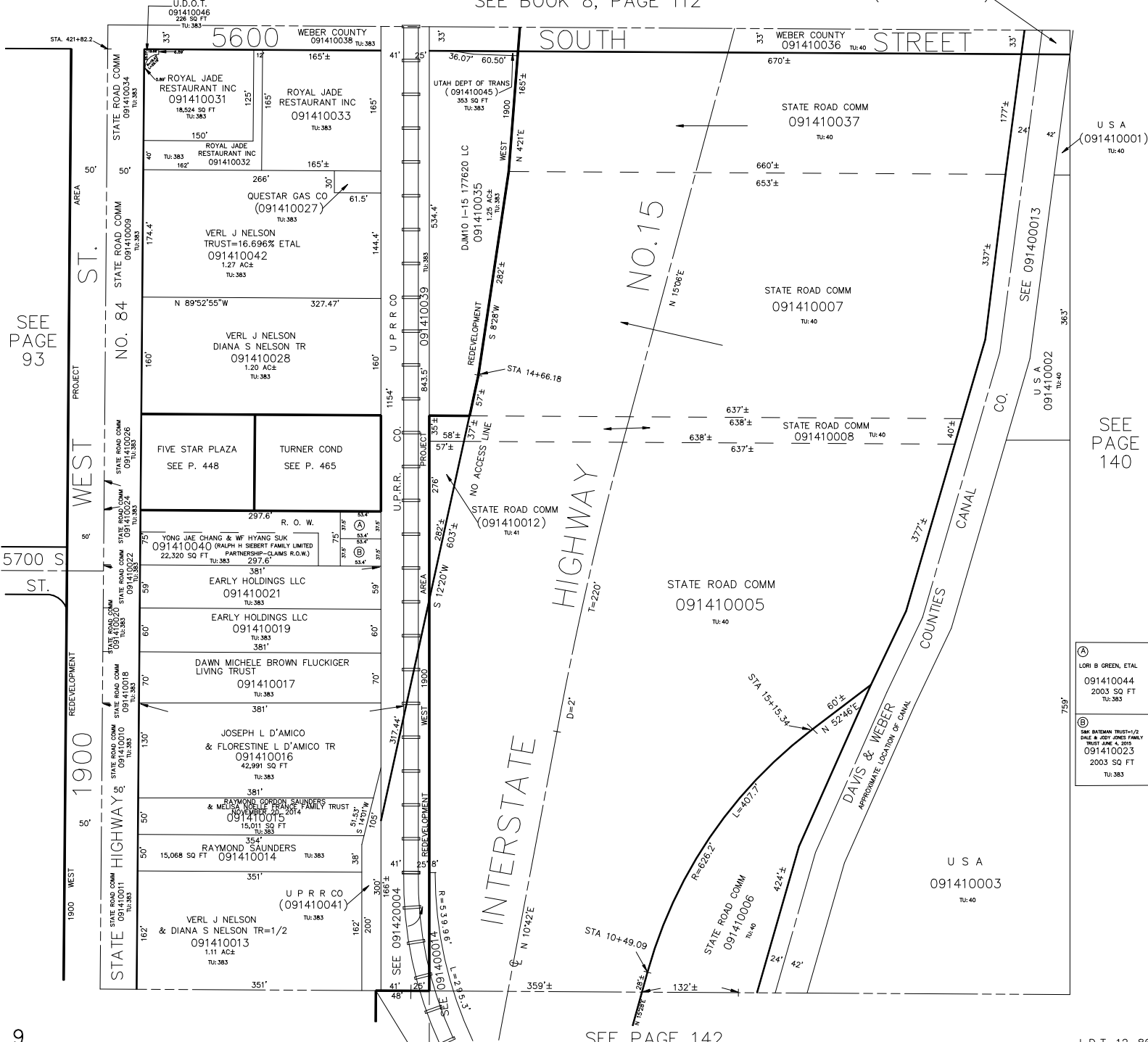
TAXING UNIT: 40, 41, 383

IN ROY CITY  
SCALE 1" = 100'

NORTH DAVIS COUNTY SEWER DISTRICT  
ROY WATER CONSERVANCY SUBDISTRICT  
BOUNDARY FOLLOWS THE WESTERLY "NO ACCESS"  
LINE OF THE INTERSTATE HIGHWAY NO. 15.

SEE BOOK 8, PAGE 112

(SEE 081130037)



SEE PAGE 93

SEE PAGE 140

(A) LORI B GREEN, ETAL  
091410044  
2003 SQ FT  
TU: 383

(B) SEE BATHAM TRUST-1/2  
DUE & JOE JONES FAMILY  
TRUST JUNE 4, 2015  
091410023  
2003 SQ FT  
TU: 383